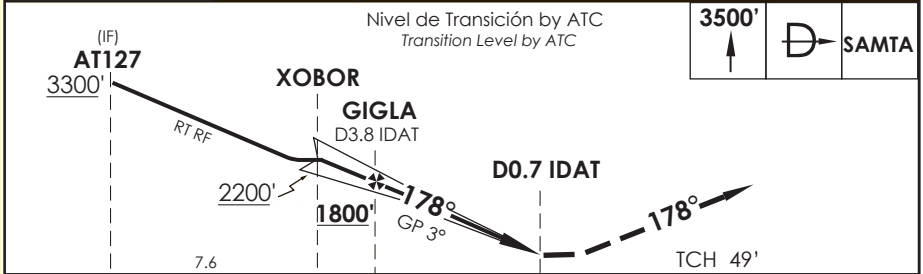
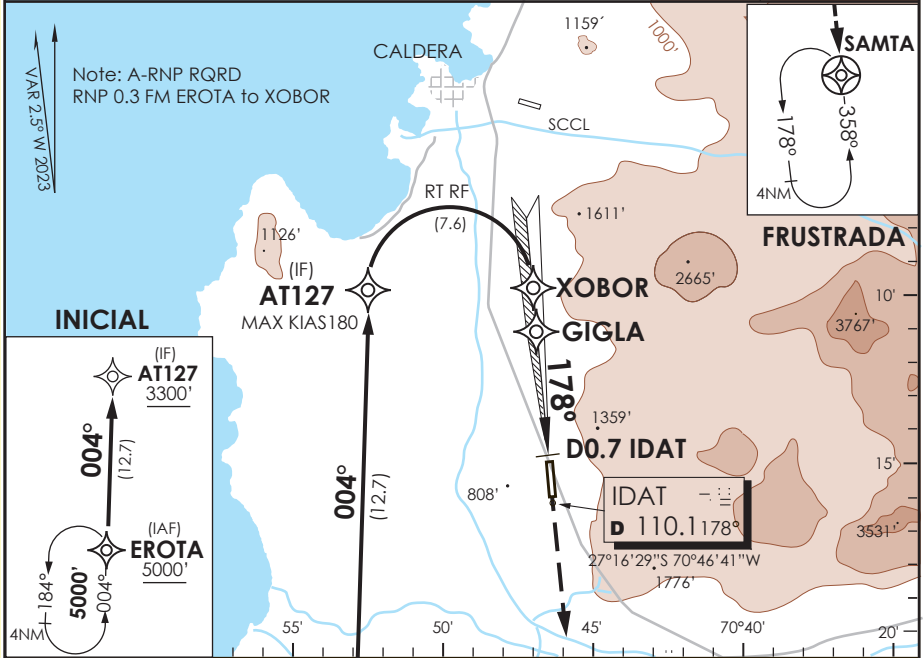


AD. DESIERTO DE ATACAMA CALDERA - CHILE

SCAT IAC 6
ILS Y o LOC Y RWY 17

APP IQUIQUE RADAR Iquique Radar Approach	120.3/128.3	TORRE ATACAMA Atacama Tower	118.3	CONTROL TERRESTRE Ground Control	121.6
LOC IDAT	FINAL APCH CRS	MNM ALT GIGLA	DA(H)	AD Elev.	THR 17 Elev.
110.1	178°	1800'	820'(200')	670'	620'
APCH FRUSTRADA: Ascenso 3500' directo a SAMTA, ingrese HLDG 358° izquierdo o según autorización ATC.					7000 FT MSA 25 NM DAT
Missed Apch: Climb to 3500' direct to SAMTA, enter on HLDG358° left or according to ATC clearance.					



CATEGORÍA	DIRECTO RWY 17 Straight in RWY 17				CIRCULANDO OESTE Circling West		ALTN Alternate Minimums
	* ILS DA 820' (200')		* LOC WO GP MDA 1080' (460')				
	ALSF-1	WO ALSF-1	ALSF-1	WO ALSF-1			
A			1.2 Km	1.6 Km	1120'	1.6 Km	VER PAG. GEN 2.19
B	RVR 750 m	1.2 Km	1.6 Km	2.0 Km	(450')	2.4 Km	
C	0.8 Km		2.0 Km	2.4 Km	1220' (550')	3.2 Km	
D							

* WO IDAT DME PROC NA / Procedure not authorized without IDAT DME

Veloc. Terrestre Kts	80	100	120	140	160
GP 3°	425'	531'	637'	743'	849'

CAMBIO: NUEVO PROC
Change: NEW PROC

DGAC SUP S02/24

22 FEBRERO 2024